

# AT Pasteurizer

## Milk Pasturizer systems

### Standards in force

The Asiatic pasteurizer's series AT are divided into two groups: AT/2 and AT/4, consisting of two or four sections respectively, to be selected according to specific customer processing requirements.

### Asiatic pasteurizers feature the following main characteristics:

#### Easy to install

The skid-mounted installations permit the user to receive an already fully assembled, compact system of modern design, easy to adapt into any kind of environment. Easy access to every component is guaranteed.

#### Hygiene

The exchanger plates are made of AISI 316 stainless steel, and all the other components are in AISI 304 stainless steel, granting maximum hygiene. The unit is designed to be connected with an automated chemical washing system (C.I.P.), but it can also be semi-automatically washed.

#### Full performance guarantee

Thanks to a series of control and safety devices, the installation guarantees automatic control of perfect pasteurization according to the selected pasteurization temperature.

#### The skid-mounted pasteurization assembly

##### Consists of:

- constant level tank, holding 100 l, complete with float and shutter
- discharge siphon



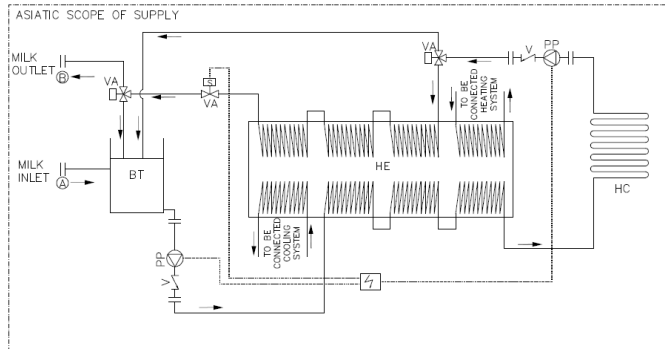
- electrical centrifugal pump for milk feeding
- heat exchanger with AISI 316 stainless steel plates  
2-section type: pre heater, pasteurizer, heat recover  
4-section type: pre heater, pasteurizer, heat recover, refrigerator
- Para clip gaskets without glueing
- retention pipe for 30" pasteurizing
- electrical centrifugal recirculation pump
- sanitary thermometers
- Temperature sensor with sanitary connection
- Three-way deviation valve for recirculation to the constant

### Tables of various models

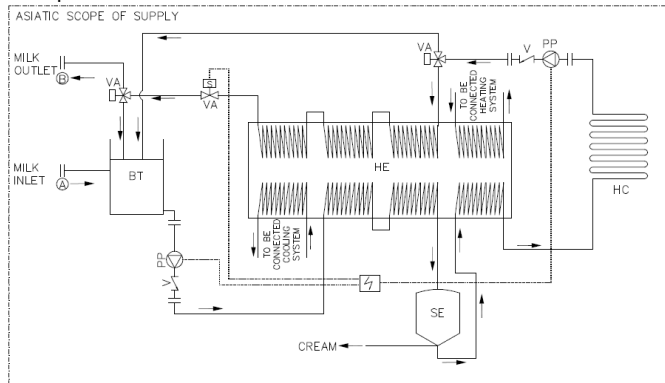
MODELS	AT 1	AT 2	AT 3	AT 5	AT 10	AT 20	AT 30
Capacity kg/h	1000	2000	3000	5000	10000	20000	30000
Feed tank capacity l	50	50	50	100	200	400	400
Feed pump power kW	0.55	0.55	1.1	1.5	2.2	3	4
No. of AISI 316 st. steel plates	68	96	120	192	248	228	404
30" retention pipe Ø mm	25	32	32	50	65	100	100
Booster pump power kW	0.55	0.55	1.1	2.2	2.2	4	4
Hot water pump power kW	0.55	1.1	1.5	2.2	3	4	5.5
Hot water pipe Ø mm	25	25	32	50	65	80	100
Cold water pipe Ø mm	25	32	32	50	80	80	100
Skid dimensions (mm) Approx.	1900x1000	2000x1000	2300x1200	2500x1500	4000x2000	5000x2500	6000x3000

## Hydraulic chart

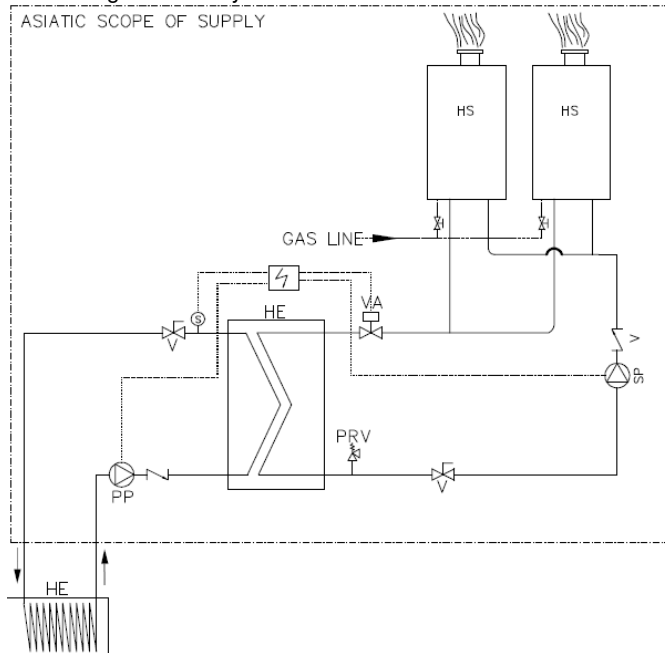
### Basic Pasteurizer



### Separator



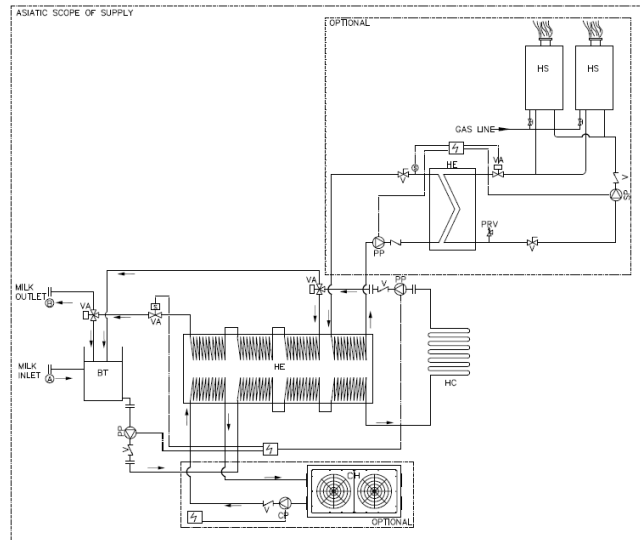
### Hot water generation system



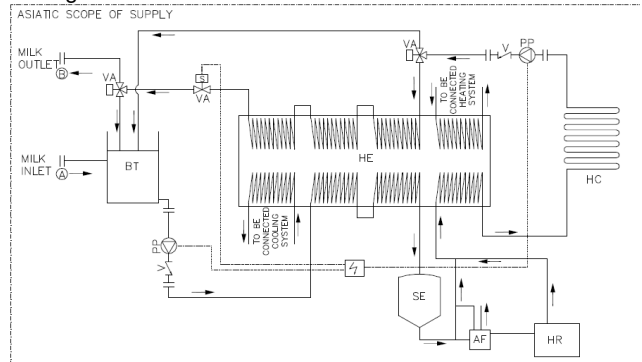
- A Primary inlet
- B Primary outlet
- BT Balance tank
- CH Chiller
- CP Chiller pump
- HC Holding Coil
- HS Heating source
- HE Heat exchanger

Pasteurizer is assembled, wired and tested prior to shipment.

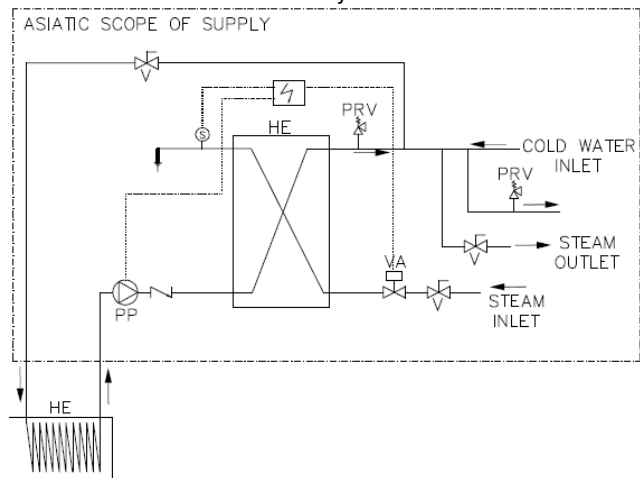
### Pasteurizer with heating & cooling systems



### Homogenizer



### Instantaneous Heat transfer system



- PP Primary pump
- SP Secondary pump
- V Valve
- VA Primary control valve
- VR Setting valve
- AF Automatic fat standardization device
- HR Homogenizer
- SE Separator

## Equipments

	Description																												
<b>Heating Source</b>	<p><b>Bosch Solar /Bosch Compact Boiler/Bosch Heat pump/Bosch Boiler (Optional)</b></p> <p><b>Detail of high efficient compact Bosch Boilers.</b></p> <p>Bosch Boilers</p> <table> <tr> <td>maximum output</td> <td>18 lpm / 30 lpm</td> </tr> <tr> <td>ignition</td> <td>batter</td> </tr> <tr> <td>efficiency</td> <td>88%</td> </tr> <tr> <td>flue connection</td> <td>110/110/130</td> </tr> <tr> <td>Gas type</td> <td>LPG/NG</td> </tr> <tr> <td>security devices</td> <td>Flame failure/ temperature limiter/ flue gas /safety device</td> </tr> <tr> <td>Display</td> <td>Temperature display &amp; error port</td> </tr> </table> <p><b>Detail of Bosch Solar thermal panel.</b></p> <table> <tr> <td>heat output per panel</td> <td>4500 kcal/ day/collector</td> </tr> <tr> <td>Absorber Area</td> <td>1.88 sq.m</td> </tr> <tr> <td>Glass transmissivity</td> <td>&gt; 92 %</td> </tr> <tr> <td>Max Operating Pressure</td> <td>6 bar</td> </tr> <tr> <td>Zero loss efficiency</td> <td>0.7</td> </tr> <tr> <td>Overall heat loss</td> <td>&lt;=3.0 W/m<sup>2</sup> °C</td> </tr> <tr> <td>Max Stagnation Temp</td> <td>170 deg C</td> </tr> </table>	maximum output	18 lpm / 30 lpm	ignition	batter	efficiency	88%	flue connection	110/110/130	Gas type	LPG/NG	security devices	Flame failure/ temperature limiter/ flue gas /safety device	Display	Temperature display & error port	heat output per panel	4500 kcal/ day/collector	Absorber Area	1.88 sq.m	Glass transmissivity	> 92 %	Max Operating Pressure	6 bar	Zero loss efficiency	0.7	Overall heat loss	<=3.0 W/m <sup>2</sup> °C	Max Stagnation Temp	170 deg C
maximum output	18 lpm / 30 lpm																												
ignition	batter																												
efficiency	88%																												
flue connection	110/110/130																												
Gas type	LPG/NG																												
security devices	Flame failure/ temperature limiter/ flue gas /safety device																												
Display	Temperature display & error port																												
heat output per panel	4500 kcal/ day/collector																												
Absorber Area	1.88 sq.m																												
Glass transmissivity	> 92 %																												
Max Operating Pressure	6 bar																												
Zero loss efficiency	0.7																												
Overall heat loss	<=3.0 W/m <sup>2</sup> °C																												
Max Stagnation Temp	170 deg C																												
<b>Cooling Source</b>	<p><b>York Chiller/ Blue Box (Optional)</b></p> <p>Air cooled chiller 18 TR</p> <p>Water cooled</p>																												
<b>Heat Exchanger</b>	<p><b>Plate Types</b></p> <p>M3, M3G, M6, M6M, M6MG, M10B, M10M, TL10B and TL10P</p> <p><b>Standard Materials</b></p> <p>Plates Stainless steel AISI 304, AISI 316 or titanium</p> <p>Gaskets Nitrile-FDA, EPDM or EPDM-FDA. Clip-On design.</p> <p>Frame and pressure plate in solid stainless steel for Base M3, 6 and 10. Outer surfaces in various grades of stainless steel. Movable nuts on tightening bolts in chromium plated brass</p>																												
<b>Holding coil</b>	Alfa Laval Sanitary range has tubes and fittings according to DIN 11850, ISO 2037, BS 4825, JIS G 3447, and ASME dimension standards/ Viscoline in case product is other than.																												
<b>Control Valve</b>	<p><b>Alfa Laval Pneumatic control valve</b></p> <p>Unique SSV Long Stroke</p> <p>Temperature range . . . . . -10°C to +140°C (EPDM)</p> <p>Max. product pressure . . . . . 1000 kPa (10 bar)</p> <p>Min. product pressure . . . . . Full vacuum</p> <p>Air pressure . . . . . 500 to 700 kPa (5 to 7 bar)</p>																												
<b>Controller</b>	<b>Aqua heat controller</b> Temperature controller with PID controller , Bar chart , with optional touch screen for complete display of system process parameter																												
<b>Primary Pump</b>	Alfa Laval FMOS /LKH Motor size 50 Hz: . . . . . 1.1 kW.																												
<b>Secondary Pump</b>	Wilo ( <b>Optional</b> )																												
<b>Chiller Pump</b>	Wilo Pumps ( <b>Optional</b> )																												
<b>Balance tank</b>	SS-304L- 50,100,200,300,400>400 liters,																												
<b>Valves</b>	Alfa Laval Sanitary range has valves according to DIN, ISO, JIS, and ASME dimension standards																												

## Partner in Brief

Established in 1974, Asiatic Traders CRISIL rated SME 1B and BEE- Accredited Energy service company (ESCO) which is into efficient turnkey solution provider to liquid and heat transfer requirement

Our pumping Skid systems are engineered to help companies solve process problems while maintaining a high level of quality and efficiency. Many of our customers tell us what they want the system to accomplish along with the basic parameters, and then our team of qualified engineers and technicians do the rest using the latest CAD design software. Customers with precise specifications and drawing packages will be pleased to learn that we do not cut corners and we will meet their exact specifications.

Give us a call today. We look forward to serving you with Quality product manufactured By Alfa Laval with our skid mounted solution package& services.



## Asiatic Traders

M-11/12 NEW SIYAGANJ, VIP ROAD, INDORE-452007  
Ph No: +91 731 2534777, HP: +91 94253 16570  
Email: [Info@asiatictraders.com](mailto:Info@asiatictraders.com) / [Pnd@asiatictraders.net](mailto:Pnd@asiatictraders.net)  
Website: [www.asiatictraders.com](http://www.asiatictraders.com)